

FUTURE LAND USE MAP OF MADISON COUNTY

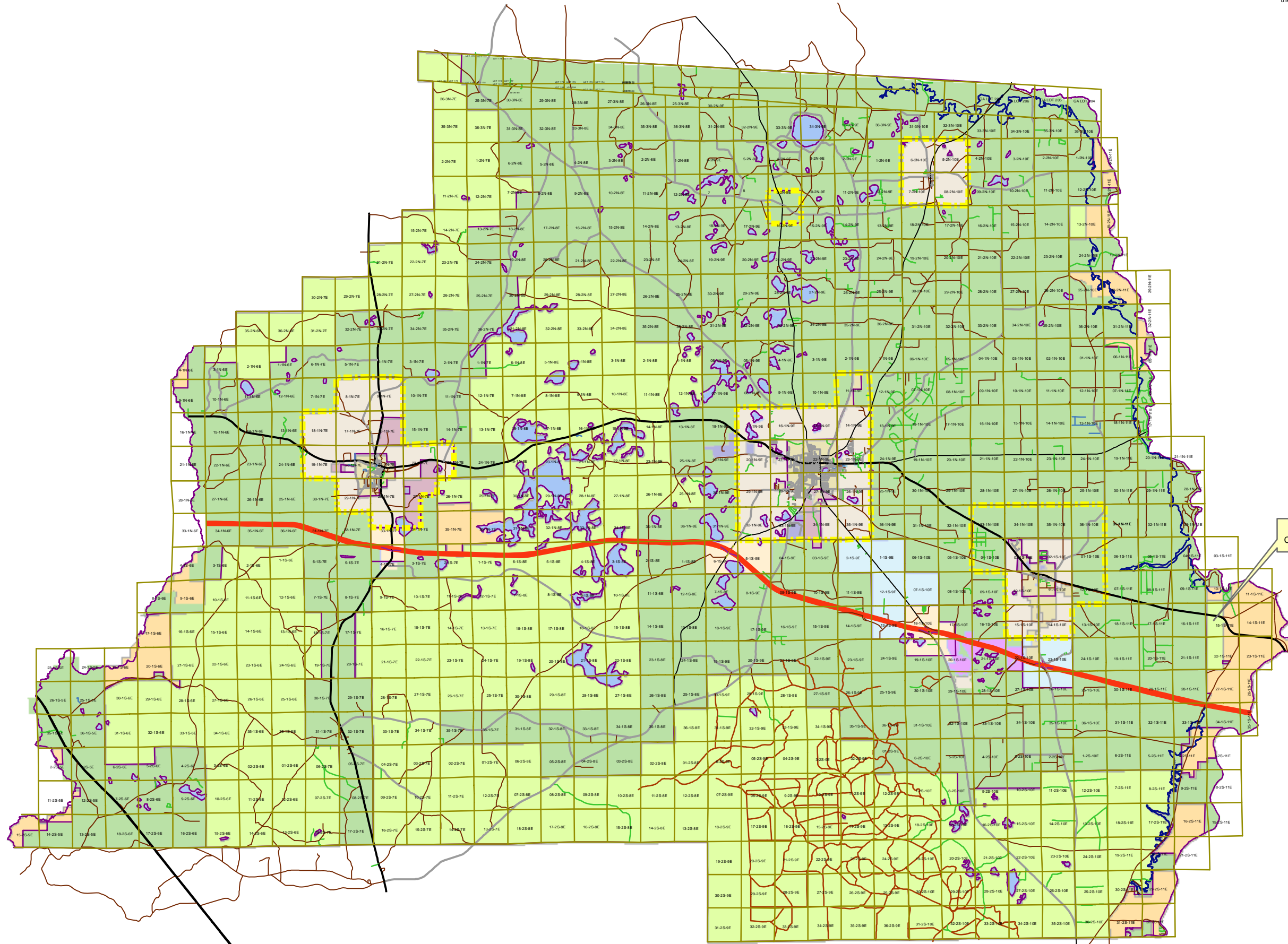
NOTE: This map has been compiled from the most authentic information available and neither Madison County nor the Madison County Property Appraiser's office assumes responsibility for errors or omissions. If you have any questions please contact the GIS/911 Addressing Office at (850) 973-1454.

FLUM

- FLOOD_ZONE
- URBAN_DEV_ZONE

FLUM

- A1 = 1 PER 40 AC
- A2 = 1 PER 10 AC
- CONSERVATION
- COMMERCIAL
- HIGHWAY INTER
- INCORP AREA
- INDUSTRIAL
- PUBLIC USE
- RESIDENTIAL
- RURAL DEV
- RURAL DEV 2
- WATER



CHANGED FROM CONSERVATION TO A-1

This document is for the Property Appraiser's use only and is not intended to be used for a survey or any other purpose including legal descriptions. Please rely on a licensed surveyor or attorney for survey quality legal descriptions and maps.

Created April 15 2009
Modified October 30 2012

