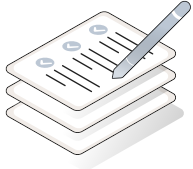


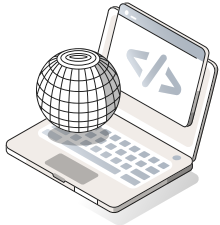
Citizen Information Madison County

Updated 10/4/2024



Crisis Cleanup

If you need help cleaning up damage from Hurricane Helene, call the Crisis Cleanup hotline at 844-965-1386 to ask for help. All services are free but not guaranteed due to overwhelming need. Volunteers may assist with muck out, trees, tarps and debris. Hotline open until Friday, October 11, 2024.



Apply for FEMA assistance

Experience damage from Hurricane Helene? FEMA may be able to help with serious needs, displacement, home repair and other disaster-caused expenses.

Online: www.DisasterAssistance.gov or download the FEMA app | **In-person:** The Bridge Church, 1135 E. US-90 in Madison. Open 9 a.m. - 7 p.m. Monday through Saturday.

By phone: 1-800-621-3362



Report property damage

Assist the Property Appraiser's Office by electronically self-reporting your damages. If you have already reported your home's damage, there is no need to re-report it. To report damages, visit www.madisonpa.com



Separate debris for pickup

Hurricane debris must be separated into six groups:

1. Electronics - TVs, computers or phones
2. Large appliances - fridges, washers/dryers, stoves, etc.
3. Hazardous waste - oil, batteries, pesticides, paint, cleaning supplies
4. Vegetative debris - tree branches, leaves or plants (don't bag leaves!)
5. Construction debris - building materials, furniture, carpeting, etc.
6. Household garbage - should be taken care of in the normal method and **not** placed by the roadway with debris.

Do NOT place debris under power lines, block any fire hydrants or utility boxes. Cut up large trees.



Madison County Strong Long Term Recovery Group

If you are still in need of help with recovery, use the link below or scan the QR code to get your name on the list. Please remember this help is free and is scheduled on a priority basis. <https://form.jotform.com/242538014708051>



@madisonflema



850-973-3698



www.madisoncountyfl.com/emergencymanagement